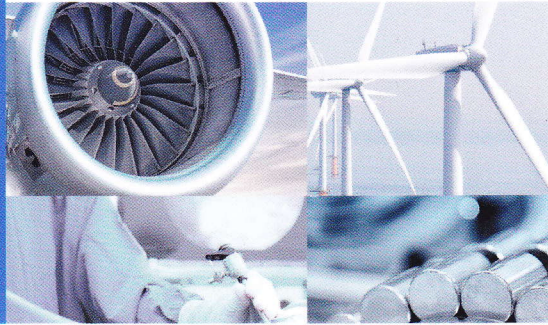


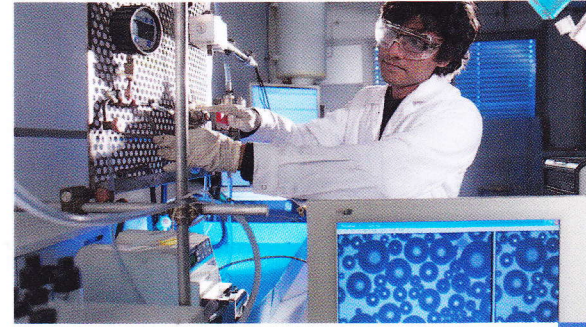


LAGEPP LABORATORY

OF AUTOMATIC CONTROL, CHEMICAL AND PHARMACEUTICAL
ENGINEERING



LAGEPP



LAGEPP is a laboratory at the interface between the sciences, engineering, processes and health whose ambition is to federate teachers -researchers in automatic, chemical engineering, and pharmaceutical engineering. Through two themes, they develop fundamental research and ensure its transfer (in relation with the industrial activity in the Rhone Alpes Region).

1. Physicochemical processes and processes in complex media dispersed and evolving (process for the preparation of nanoparticles, crystallization, lyophilisation).
2. Dynamic modelling, observation and control of processes.

TECHNOLOGICAL KNOWHOW

- > **STRUCTURED MODELING AND PROCESS CONTROL**, from theoretical development to the implementation of tools to analyze, model, simulate, control and optimize systems in processes engineering.
- > **FORMULATION OF DRUG DELIVERY SYSTEMS** for pharmaceutical, cosmetic and diagnostic applications.
- > **STUDY AND MODELLING OF ELABORATION PROCESSES**, separation and formulation of dispersed solids and emulsions.
- > **DEVELOPMENT OF DYNAMIC MODELS OF COMPLEX, MULTI-SCALE AND INTERCONNECTED PROCESSES.**

FOR INDUSTRIAL SECTORS

Chemistry and Materials, New energy systems industries, Healthcare industries and technologies, Fashion and Luxury goods, Nuclear

RESOURCES

- **Physico-chemical analyses:** rheometers, spectrometers UV/Vis, FTIR and Raman, chromatographic equipments, elementary analysis, laser granulometers...
- **Thermal analyses:** differential scanning calorimetry, ATG, thermogravimetry, Dynamic Vapour Sorption...
- **Formulation:** mixing and dispersing devices, High pressure homogeniser, granulator, tableting machines, Freeze dryers, spray dryer...
- **Imaging:** laser reflectance system, high-speed photon camera, Video Probe, Light microscope...
- **Experimental set-ups:** filtration unit, pilot plants, reactors, mixing processes, bioreactors, crystallization units...
- **Platforms:** COSLIFE (cosmetic), DADY (automatic and dynamic), IMTHERNAT (molecular and therapeutic imaging), INNOBIOVIR (bioprocesses, virus)

PARTNERSHIPS

Volvo, IFPEN, J&J, Biomerieux, Bayer, Strand Cosmetics Europe, Gattefossé, Sanofi Pasteur, CEA, Axel'One, Faure, Daikin, Total, Solvay, CIAT, Lyophitec, Yneo, Nexans, Adisseo, Arkema, Enytech Pharma, Animine, Sanofi-Aventis, ...

CONTACT

UNIVERSITÉ LYON 1 - LAGEPP

Bâtiment CPE-308G43 Boulevard du 11 novembre 1918
69622 Villeurbanne 04 72 43 18 93 - web : lagepp.univ-lyon1.fr
Stéphanie BRIANÇON > stephanie.briancon@univ-lyon1.fr
Lilian MARTINEZ > lilian.martinez@ingenierie-at-lyon.org | 07 76 58 11 66

Full-time Equivalent 62	Partnership receipts €1,400,000	PhDs 38	Publications in top flight journals/year 80 to 100

MEMBER OF

